



where we all are leaders!

A little **Courage**,  
Lots of **Motivation**,  
& a firm **Support**,



... and they can  
fly high to  
be a **Leader**.



ENLIGHTENED MINDS & ADEPT HANDS  
Affiliated to C. B. S. E.

[www.sapphireschool.in](http://www.sapphireschool.in)



## ABOUT US

Established in the year 2003, we are committed to raise future ready global citizens, who are innovative and courageous to venture into unexplored territories through our philosophy that is based on the belief 'Every Child is A Leader', with this the school also ensures that they develop strong roots. Most importantly, children are loved and cherished so that they approach life with positive attitude. In a way, Sapphire ushers the child into a world of possibilities where his/her personality blossoms.

## APPROACH

Sapphire takes utmost care to equip the students with a curriculum that is enlaced with the unique integration of the traditional as well as the modern educational practices. We intensely believe that Pre-primary education should be imparted in a manner that it progresses these toddlers for poised formal education setup. It is the most unique school that bases its approach on the principles of the multiple intelligence framework of Dr. Howard Gardener, a well-known cognitive psychologist from Harvard University. Our approach prepares the child to the needs of 21st century. The framework prepares the child to think out of the box, hone their skills, develop individual strengths, experiment, explore and initiate. All these are the qualities that will allow students to ride the tide of the information age. Since we understand that every child learns in many ways and each has his/ her own interests and needs, we provide children with multiple access or entry points to a concept, understanding the difference in interests, needs and learning styles.

Sapphire ...  
... where every Child  
is encouraged to  
**DREAM BIG**  
**& DIFFERENT**  
to create  
**FOOTPRINTS of**  
**the LEADER**  
within ...

Just like ...





& certainly  
dream ... to be an ACHIEVER !!



Interactive white board and projection screens

Language Lab

## Core Strengths



Individual  
Mentor & Coach  
for each child  
– a continuous  
reinforcement of  
Self belief  
& Confidence.

Hand picked faculty &  
experienced management team

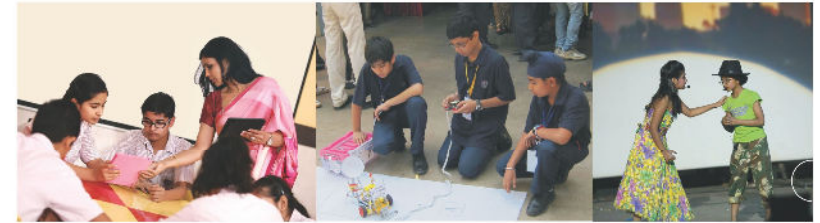
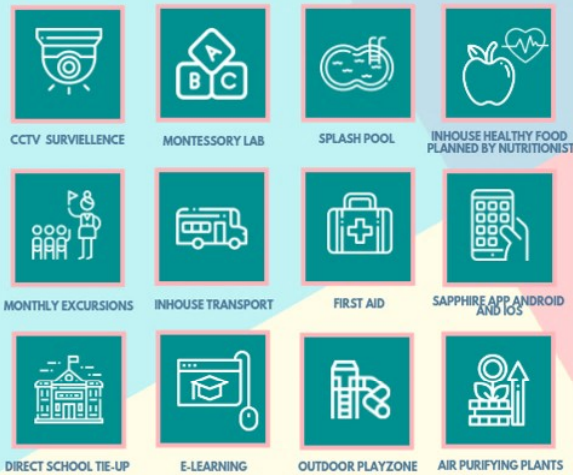
Thematic Teaching



## OUR CURRICULUM



## FACILITIES



Project Based Learning

Reinforcing Concepts through Robotics

Creative & Performing Arts

Individual Mentor & Coach for each child – a continuous reinforcement of Self belief & Confidence.



### Major Highlights:

- Interface with eminent national and international leaders from all walks of life
- A unique "Incubation Centre", providing exposure to real life Leadership attributes
- Integrated Academic and Leadership curriculum based on Steven Covey's Seven habits principle
- Early age International exposure to evolve global mind set, in association with University of Cambridge and British Council

## Infrastructure & Facilities



Intellectual development on Montessori pattern

Multiple Intelligence Lab.



## Nurturing well rounded minds together

“To assist a child, we must provide him with an environment while will enable him to develop freely”

Our school campus is well designed and equipped to create the perfect place for school children to play and learn in a safe educational system .It is designed and built with areas for role play; as well as space to help set their imaginations free. While also keeping them moving, climbing, running and jumping; all the exercise they need to help keep them fit and healthy.

Sapphire caters to the holistic development of child through:

- **Physical and Physiological Development** – enhancing gross and fine motor skills – through Montessori activities like beading, folding, buttoning, spooning, etc.
- **Language Development** - through Phonetic, Auditory Games and Story Telling Sessions.
- **Pre – writing Skills** – established through insets for design, tracing sandpaper letters, making patterns in sand.
- **Specific Activities** - have also been designed for enhancement of neuromuscular control, eye-hand co-ordination, development of pincer and dominant finger's grip for future writing skills.
- **Multiple Intelligence Approach** - Teaching important concepts in multiple ways thereby teaching each and every student effectively.

STUDENT - ADULT RATIO - 16:3 for Play Group & Pre Nursery.

STRONGER, HEALTHIER, HAPPIER

## MI-BASED LEARNING







## Early Age International Exposure to Evolve Global Mindset



a

### SAPPHIRE ACADEMIES

#### The Society of Performing Arts (Dance-Music-Theatre)



साहित्य संगीत कला विहीनः साक्षान् पशुः पुच्छ विषाण हीनः

(The man without (love of) literature, music or the arts is indeed an animal without a tail or horns.)

The essence of Sanskrit Shloka cited above is that a man is like an animal without active indulgence in one or the other form of performing arts, for it helps in internal development of a human being in addition to providing an avenue for exiting career options. Under the active guidance of experienced gurus, the society of Performing Arts provides a platform to young budding artists to move swiftly from foundation level to specialized forms of performing arts.

#### The Robotics Club



Robots are no longer a subject of Science Fiction and are now being used extensively in various industries, performing complex jobs. All children have a fascination for robots and the science behind it. Reinforcing the concepts of Physics and Electronics, Robotics Club is an exciting place for our young scientists to unleash their scientific creativity. As a part of this club, the children create real life robotic models and also participate in several National & International competitive events.

#### The Animation Club



Welcome to the fantasy world of Tom & Jerry, Doraemon, Barbie, Chhota Bhim ... etc. Every child grows up watching and playing with cartoons and other imaginary characters around. It is every child's dream to get into the lives of these characters and play with them. Conceptualised and managed by Lifeway College, Newzealand, one of the leading global animation institutes, the animation club is a virtual world of fantasy that your child lives in and in the process learns the skills of Imagination, Visualization, Sketching and Animation. So, get into your seats with buttery popcorn and chilled coke, to watch an animation movie, created by your child.

#### The Wanderer's Club



We live in a beautiful world ... A world which is full of ecstatic collection of natural and man-made wonders. Ranging from the enigma of breathtaking scenic sights to hugely diverse spread of cultures & cuisines, from millions of species of plants and animals to marvels of architecture across the globe. Its all here on this mother earth with such an ecstatic celebration of life that no human could afford to miss it. Explore this universe and its diversity... come, be a part of the Wanderer's Club.

#### The Academy of Sports



A conversation between two Australians starts with asking "What sport do you Play", followed by other discussions related to money, work etc. And we all know Australia is considered on top amongst the group of Happy Nations. Sports is not just a physical activity but is a key ingredient of a person's evolution at Physical, Intellectual and Emotional level. The sports academy at Sapphire, managed by one of the leading sports management company and offering wide range of sporting activities to choose from, provides a platform for your child to hone his sporting skills.

#### The House of Pottery & Sculpture



India is the home for one of the finest collection of sculptures. The great caves of Ajanta & Ellora and temples of Khajuraho are a few examples of the great tradition of Indian art & sculpture. The house of Pottery & Sculpture gives shape to the creative skills of kids to create objects with the use of motor skills and earthy material like mud, sand, rocks, etc. In formative stages, it is considered to be the finest and world's most accepted mode of learning as it improves gross and fine motor skills. It also gives impetus to child's ceaseless and untapped creative genius within.

# Building the foundation to DREAM BIG



## Our Proud Associates:



Sapphire International School, with its extraordinary and innovative approach, has laid a new foundation for learning. Way back in 2003, Sapphire Nursery School was set up at Anand Vihar, Delhi to provide quality and value based education to students.

The senior secondary school at Noida, sector 70, is a premier co-educational English medium day boarding school. With its sprawling lush green campus, state-of-the-art facilities, modern technologies and world class infrastructure, it provides a perfect room for learning and knowledge for the leaders of tomorrow. A blend of tradition and modernity, this institution imparts a natural impetus towards a quest for excellence.



# SAPPHIRE INTERNATIONAL SCHOOL



Printed by : Prem Printers 9811327330

### Noida

SS-1, Sec-70, Noida

9560600019

### Crossings Republik

EF 7 & 8, School Street,  
Crossings Republik, Ghaziabad

9650546546/8130101115

### Anand Vihar

B-Block, Anand Vihar, New  
Delhi

9560600021

[www.sapphireschool.in](http://www.sapphireschool.in)

[info@sapphireschool.in](mailto:info@sapphireschool.in)

+91-9560600019